

# Lucoflex PIN CONNECTOR INSTALLATION GUIDE



**LUCOLED**  
Experience Lighting

Lucoflex LED neon replacement is easy to install in straight or curved spaces in both indoor and outdoor conditions. It creates a uniform, bright, neon-alternative effect.

**Please read these guidelines completely before installing.**

It is important to read these guidelines completely to understand how Lucoflex can be configured, cut to size, re-connected, and installed so you can design your own LED lighting layout.

- NEVER attempt any work without shutting off the electricity. Use only with low voltage
- 24V DC power source supplied by Lucoled.
- Do not stare directly into the LED lights when illuminated. Do not power Lucoflex while still coiled on reel. This can damage the product.
- Always observe polarity for connections, positive (+) to positive and negative (-) to negative.
- To be installed by a qualified electrician.
- Keep away from combustible materials such as plastic or paper products.

**All wiring must be in accordance with national and local electrical codes, low voltage Class 2 circuit. If you are unclear as to how to install and wire this product, contact a qualified professional.**



## Unpacking

Rolling the wheel when you unpacking the light.

*Warning: Do NOT shake the light!  
Do NOT pull the light from the wheel straightly.*



## No Twisting

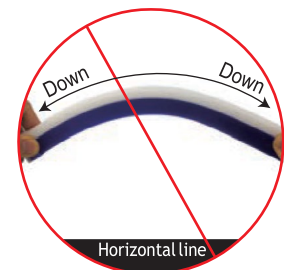
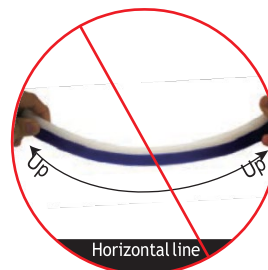
Lucoflex is NOT allow to twisted in any conditions. The electrical circuit or LED chips could be damaged with this action.



## Bending

Lucoflex can only be bent laterally (opposite bent along to light surface).

Do not bend smaller than allowed minimum bend diameter. The electrical circuit or LED chips could be damaged if bending diameter is too small.



## Incorrect Bending

Lucoflex is NOT allow to bending in up and down way.

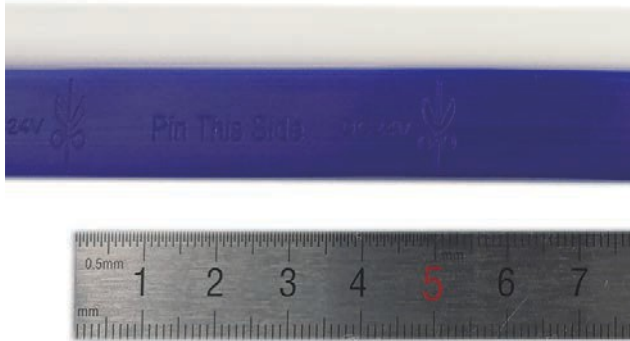
The bending as photos show will damage the electrical circuit or LED chips damaged seriously by this incorrect action.



## CUTTING

Lucoflex's 24V DC cuttable length is every 5cm.

Use a pipe or branch cutter to cut Lucoflex on the scissor cut marks.



## PIN CONNECTOR INSTALLATION

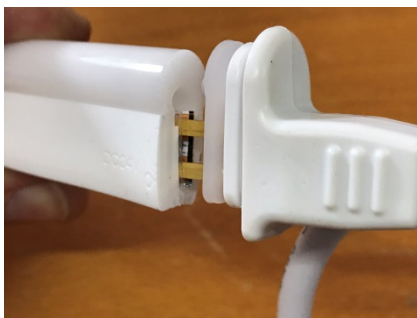


### Remove PET tape

Use a small knife to remove the PET tape from the back of the flexible circuit board to create space for the connection pins.



Create space between PET tape and PCB



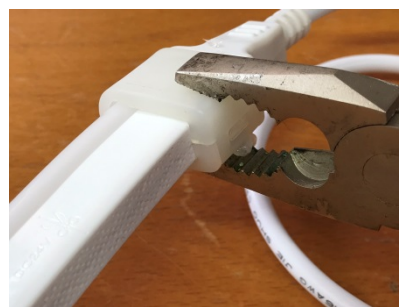
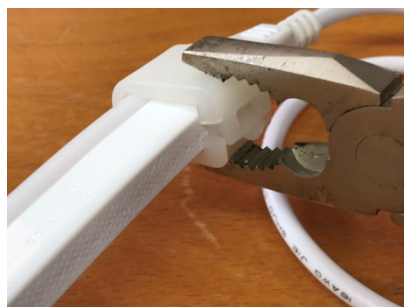
### Insert pin connector

Insert the pin connector between the PET tape and the copper connections on the board. Make sure the pins touch the copper.



### Apply silicon

Apply a silicon layer on all sides of the tube.



## Install cover

Install the cover with the large opening facing towards the Lucoflex. Close firmly with a plier.



## Finish

Remove excess silicon and test the connection before installation.