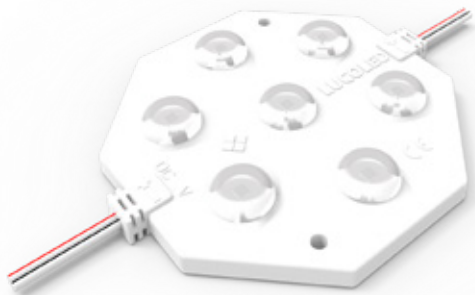




## LUCOLED BL71



- *5 years warranty*  
*First 2 years extended warranty*
- *Lucolense wide beam technology*
- *High efficacy*
- *Constant Current Technology*
- *Narrow white binning*

**Lucoled Plus BL71 modules** offer a high quality and efficient backlit solution for lightboxes with a depth of 120-300 mm.

Using the latest Top-Tier LED technology and high quality patented optics Lucoled Plus BL71 offers industry leading efficacy and coverage. This not only reduces the amount of modules needed for an application, but also the overall power consumption.

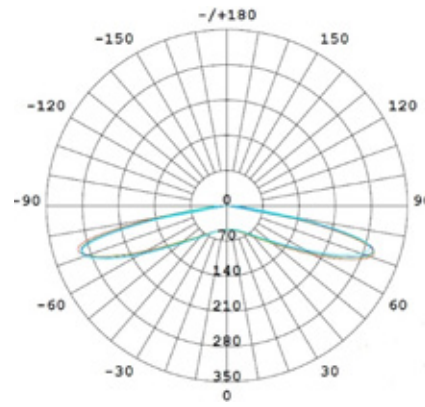
In a typical application of 160 mm deep only 4 modules per square meter are used at maximum wire spacing, making installation very fast and less labour intensive. Using only 28 W per square meter also the number of power supplies needed is strongly reduced.

## SPECIFICATIONS

- Dimensions 100x90x10mm
- Warranty 5 years (first 2 years extended)
- Beam angle: 160°
- Can be cut between every unit
- UL, CE and RoHS compliant
- Narrow white binning
- Constant Current Technology
- Operating temperature -25~+60C

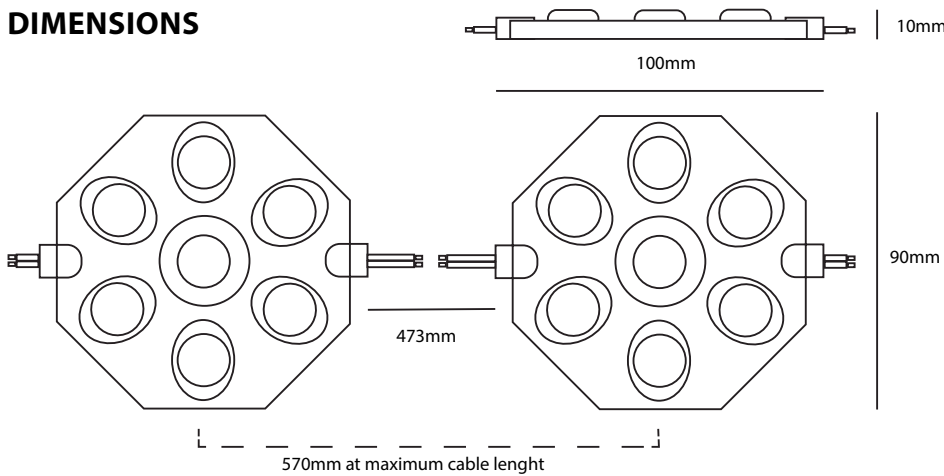


## LUMINOUS INTENSITY DISTRIBUTION

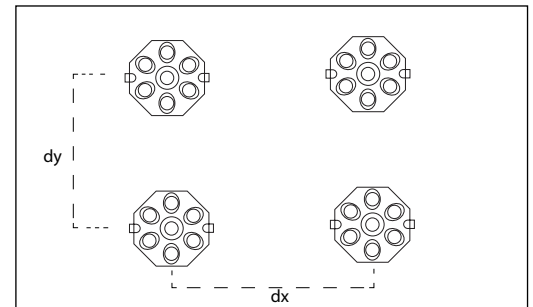


| Item no  | LED colour | CT (K) | CRI | Power (W/mod) | Flux (lm/mod) | Efficacy (lm/W) | Voltage (DC) | Modules per chain | Modules per carton |
|----------|------------|--------|-----|---------------|---------------|-----------------|--------------|-------------------|--------------------|
| BL71-W65 | white      | 6500   | >70 | 7.0           | 850           | 121             | 24           | 10                | 80                 |

## DIMENSIONS



| Light box depth (mm) | Space between modules (mm) | Installing density (pcs/m <sup>2</sup> ) | Surface luminance range (cd/m <sup>2</sup> ) |
|----------------------|----------------------------|------------------------------------------|----------------------------------------------|
| dz=120               | dx=300, dy=300             | 9                                        | 1250-1350                                    |
| dz=150               | dx=450, dy=400             | 6                                        | 850-950                                      |
| dz=180               | dx=500, dy=500             | 4                                        | 450-550                                      |
| dz=180               | dx=450, dy=400             | 6                                        | 700-800                                      |
| dz=180               | dx=300, dy=300             | 9                                        | 1050-1150                                    |
| dz=250               | dx=500, dy=500             | 4                                        | 350-450                                      |



Results may vary depending on face material properties. The data above was obtained using 3mm thick opaque acrylic with a 54% light transmittance. Lucoled advises to paint the inside of the box/letters in a matt white colour for achieving an optimal result. Always test before production.

## POWER SUPPLY CAPACITY 24V SERIES

| Item                                | PP2430 | PP2460 | PP24100 | PP24150 | PP24200 |
|-------------------------------------|--------|--------|---------|---------|---------|
| Power Output                        | 30W    | 60W    | 100W    | 150W    | 200W    |
| BL71 modules / power supply         | 3      | 7      | 13      | 19      | 25      |
| <b>Maximum 10 modules per chain</b> |        |        |         |         |         |

## PACKAGING

| Item | Qty (pcs/bag) | Qty (pcs / carton) | Total Qty (pcs / carton) | Total weight (kg) | Carton size (LxWxH) in mm |
|------|---------------|--------------------|--------------------------|-------------------|---------------------------|
| BL71 | 20            | 80                 | 160                      | 15.3              | 528 x 376 x 272           |